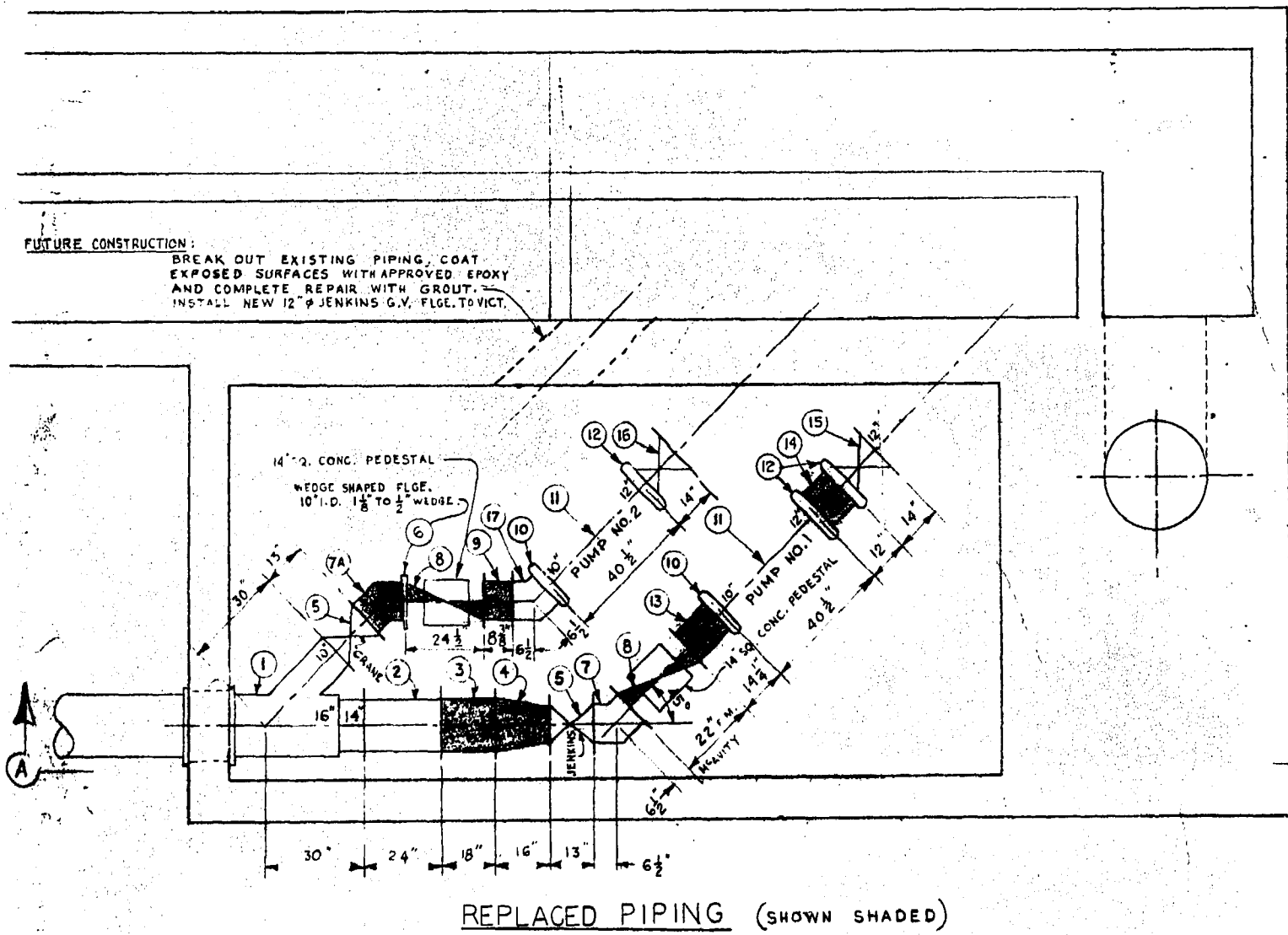
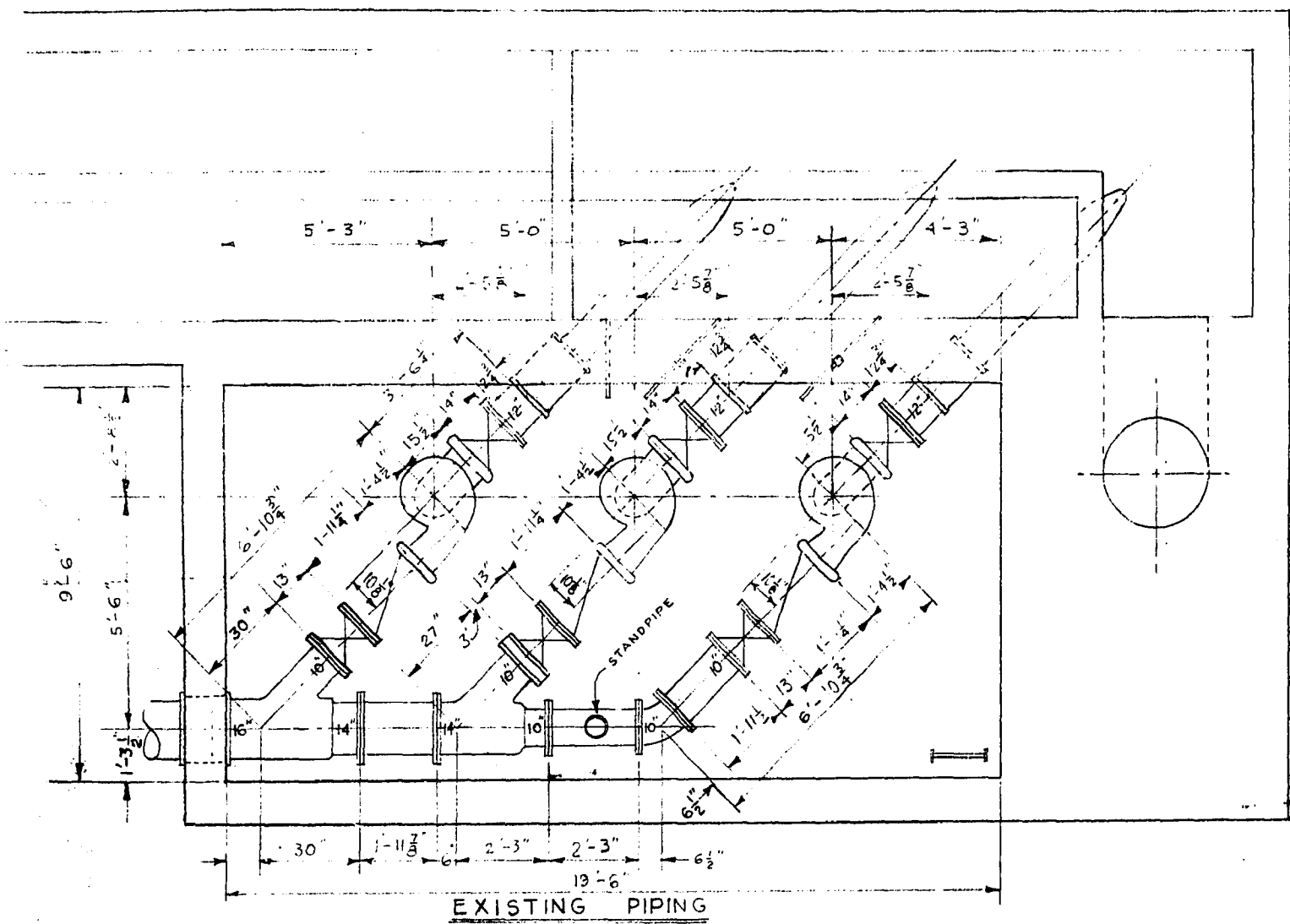
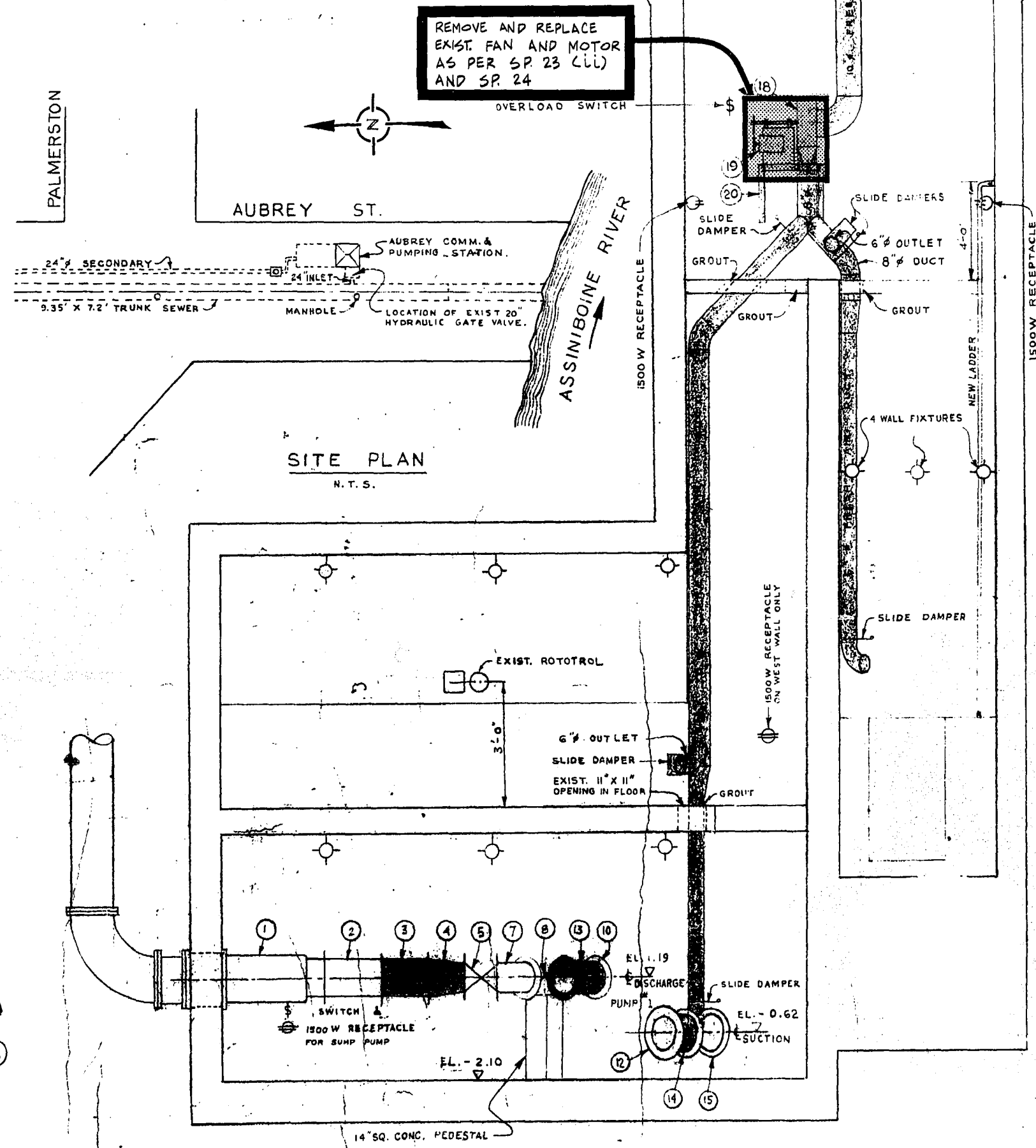


REF. OF DRAWING No. **498A**
 DETAILS
 File # **SP 10105**

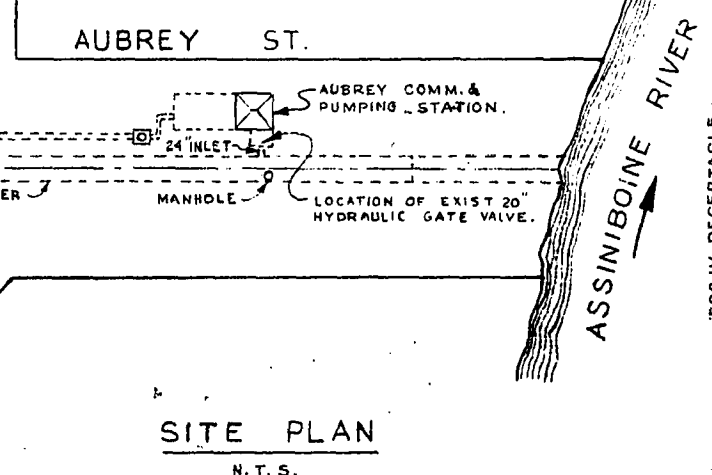


FUTURE CONSTRUCTION:
 BREAK OUT EXISTING PIPING, COAT EXPOSED SURFACES WITH APPROVED EPOXY AND COMPLETE REPAIR WITH GROUT. INSTALL NEW 12" JENKINS G.V. FLO. TO VICT.

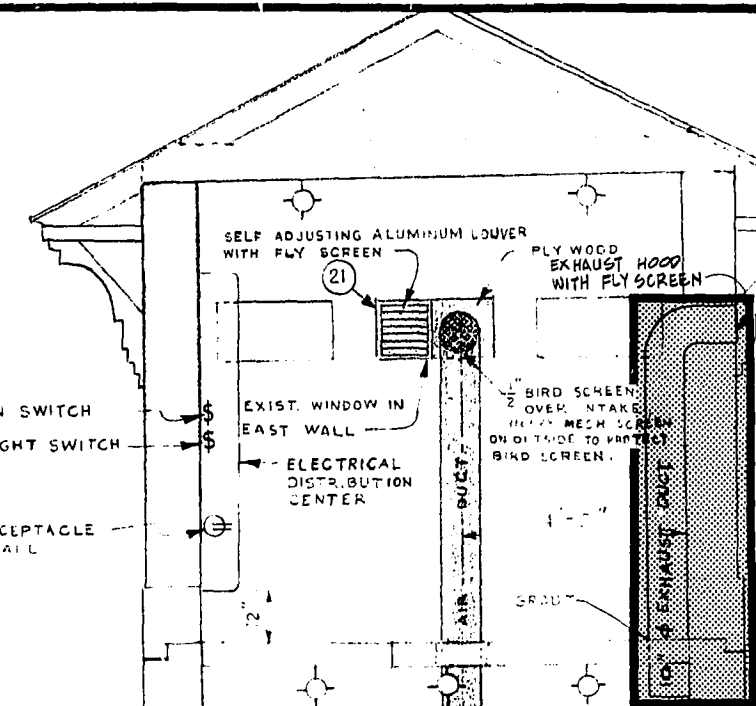
- NOTES**
- REMOVE EXISTING FRESH AIR DUCTS, FAN, MOTOR & SUPPORTS. INSTALL NEW FRESH AIR DUCTS, FAN, MOTOR & SUPPORTS AS SHOWN SHADED ON DRAWING. DO NOT REMOVE EXIST. EXHAUST DUCT ON WEST WALL.
 - METRO TO SUPPLY 2 MONARCH PUMPS WITH SHAFTS & MOTORS & 1-20" ENKINS HYDRAULIC GATE VALVE. NOT SHOWN ON DRAWING. INSTALLATION BY CONTRACTOR.
 - CONTRACTOR IS RESPONSIBLE FOR ALL NECESSARY PUMP & PIPING SUPPORTS.
 - ALL GROUT SHALL BE NON-SHRINKABLE FERROGRUOT OR APPROVED EQUAL.
 - ALL PIPING CLASS 22 CAST IRON.



PALMERSTON



REMOVE AND REPLACE EXIST. FAN AND MOTOR AS PER SP 23 (CL) AND SP 24



MATERIAL LIST					
NO.	QTY	SIZE	DESCRIPTION	END	REMARKS
1	1	16x14x10'	C.I. TEE	FLGE. - FLGE	EXISTING
2	1	14"	C.I. FILLER	" - "	"
3	1	14"	C.I.	" - "	NEW
4	1	14"x10"	C.I. REDUCER	" - "	"
5	2	10"	C.I. GATE VALVES (JENKINS)	" - "	EXISTING
6	1	10"	C.I. FILLER WEDGE SHAPED	FLANGE	WEDGE NEW
7	1	10"	C.I. ELBOWS	FLGE. - FLGE	EXIST. - NEW
8	1	10"	C.I. CHECK VALVES (MAYNARD)	" - "	NEW
9	1	10"	C.I. FILLER	" - "	NEW
10	1	10"	METALLIC COUPLINGS	" - "	EXIST. - REPLACE
11	1	12"x10"	MONARCH PUMPS	7 FT VICT	NEW
12	2	2"	METALLIC COUPLINGS	" - "	EXIST. - REPLACE
13	1	1/2"	C.I. FILLER	FLGE. - VICT	NEW
14	1	1/2"	C.I. CHECK VALVES (MAYNARD)	FLGE. - VICT	EXISTING
15	1	1/2"	C.I.	CRANE VICT - FLGE	NEW
16	1	10"	EL BOW	FLGE. - VICT	NEW
17	1	10"	FAN (SEE SP 23 (CL) & SP 24)	" - "	DUAL SPEED
18	1	1/2 HP	MOTOR (SEE SP 23 (CL) & SP 24)	" - "	WALL MOUNTED
19	1	2'x2'x1/2"	SUPPORT	" - "	"
20	1	20 SUIT	CARNES ALUM LOUVER MODEL L-36	" - "	"
21	1	10"	EL BOW	FLGE. - FLGE	SPECIAL CASTING

SUPPLIED BY METRO:

	A	B	C	
LIGHTS	15	1	2	15 UTILITY PLUG II
LIGHTS	15	2	1	15 UTILITY PLUG III
BLOWER	15	1	1	15 UTILITY PLUG IV
SUMP PUMP	15	2	1	15 MOTOR CONTROL
UTILITY PLUG I	15	2	1	15 ALARM PANEL
SPARE	15	1	1	15 SPARE

12 CCT BREAKER PANEL LAYOUT

- LIST OF FIXTURES**
- PUMP FLOOR - 3 CEILING FIXTURES; SUMP PUMP 1/2 HP 120 V. SUBM. (OVERLOAD DISCONNECT PLUS PLUG)
 - PUMP MOTOR FLOOR - 3 CEILING FIXTURES; UTILITY PLUG I
 - COMM MOTOR FLOOR - 2 CEILING FIXTURES; UTILITY PLUGS II, III, BLOWER (OVERLOAD DISCONNECT)
 - VALVE CHAMBER - 1 WALL FIXTURE
 - COMM CHAMBER - 4 WALL FIXTURES
 - TOP FLOOR - 2 CEILING FIXTURES; UTILITY PLUG IV; 2 POLE LIGHTING SWITCH (2 SPEED SELECTROL SWITCH FOR BLOWER)

